

LAB14: (Pre-fix) BGP – IPv6

Disclaimer

This Configuration Guide is designed to assist members to enhance their skills in respective technology area. While every effort has been made to ensure that all material is as complete and accurate as possible, the enclosed material is presented on an “as is” basis. Neither the authors nor Forum assume any liability or responsibility to any person or entity with respect to loss or damages incurred from the information contained in this guide. This Lab Guide was developed by RSTForum. Any similarities between material presented in this configuration guide and any other material is completely coincidental.



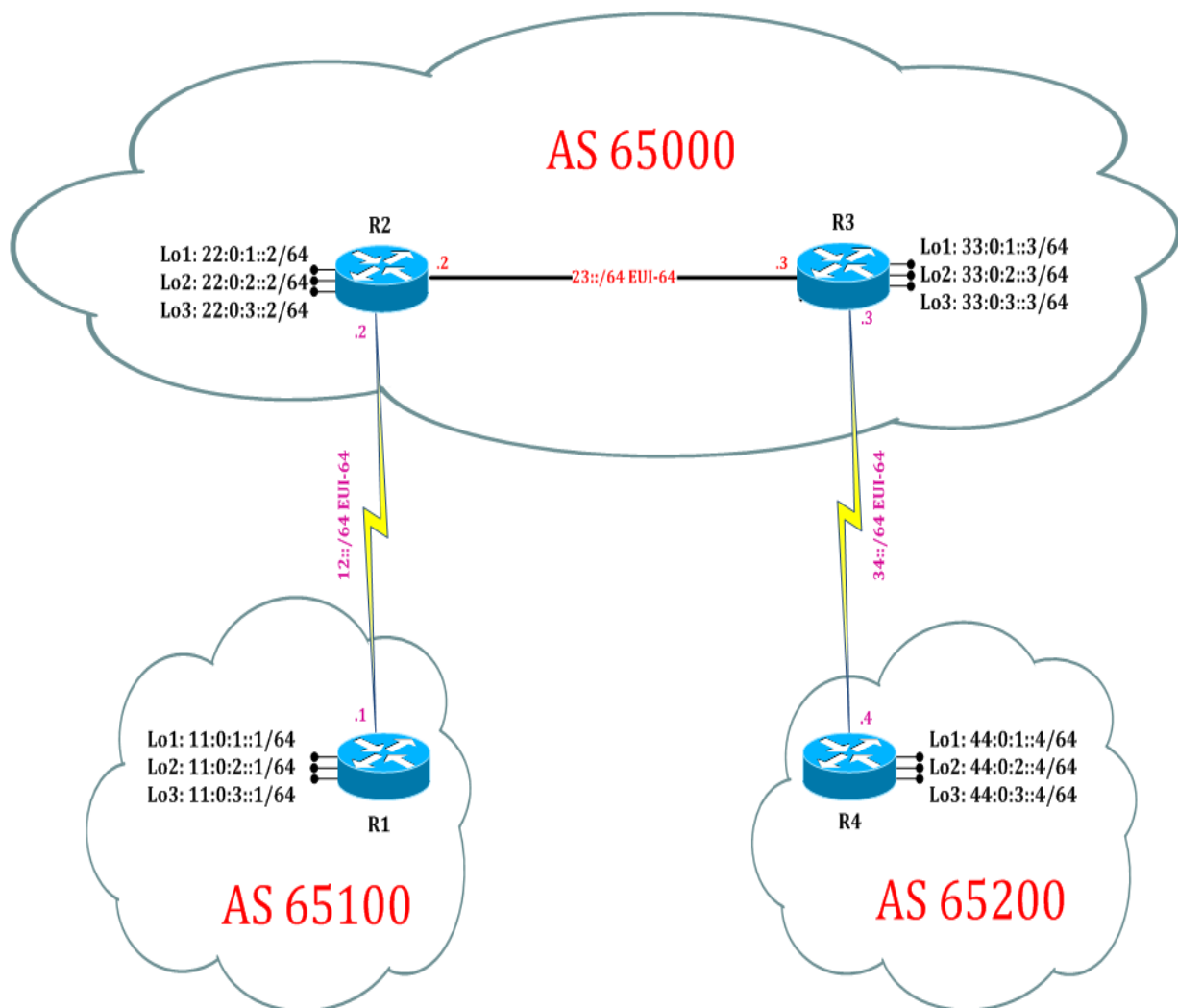
Routing
Switching
Tigers
Forum

BGP: Summarization

||| www.rstforum.net

LAB 14: Diagram

Note: This Lab was developed on Cisco IOS Version 15.2(4) M1 ADVENTERPRISEK9-M.



LAB 14: BGP IPv6 Summarization with Pre-fix Address

Task 1: Configure IPv6 BGP Summarization with Pre-fix Address

Step 1 Summarize with BGP routes in router mode with Pre-fix Address

```
R3:
router bgp 65000
address-family ipv6
aggregate-address 11::/16
neighbor 44:0:1::4 prefix-list ooo out
exit
exit
ipv6 prefix-list ooo seq 5 deny 11::/16 ge 32
ipv6 prefix-list ooo seq 10 permit ::/0 le 128
```

(Here with prefix-list we are denying 11:: network having mask greater or equal to 23 and rest any route it will allow but should be less than 32 because route with 32 mask will be host address.)

Step 2 Verify receipt of summary route in other router's BGP table by following command

```
R4# show bgp ipv6 unicast
```

```
BGP table version is 11, local router ID is 44.0.3.4
Status codes: s suppressed, d damped, h history, * valid, > best, i - internal,
               r RIB-failure, S Stale, m multipath, b backup-path, f RT-Filter,
               x best-external, a additional-path, c RIB-compressed,
Origin codes: i - IGP, e - EGP, ? - incomplete
RPKI validation codes: V valid, I invalid, N Not found
```

Network	Next Hop	Metric	LocPrf	Weight	Path
*> 11::/16	33:0:1::3	0		0	65000 i
*> 22:0:1::/64	33:0:1::3			0	65000 i
*> 22:0:2::/64	33:0:1::3			0	65000 i
*> 22:0:3::/64	33:0:1::3			0	65000 i
*> 33:0:1::/64	33:0:1::3	0		0	65000 i
*> 33:0:2::/64	33:0:1::3	0		0	65000 i
*> 33:0:3::/64	33:0:1::3	0		0	65000 i
*> 44:0:1::/64	::	0		32768	i
*> 44:0:2::/64	::	0		32768	i
*> 44:0:3::/64	::	0		32768	i

(Here only summarized route is received using prefix-list.)